

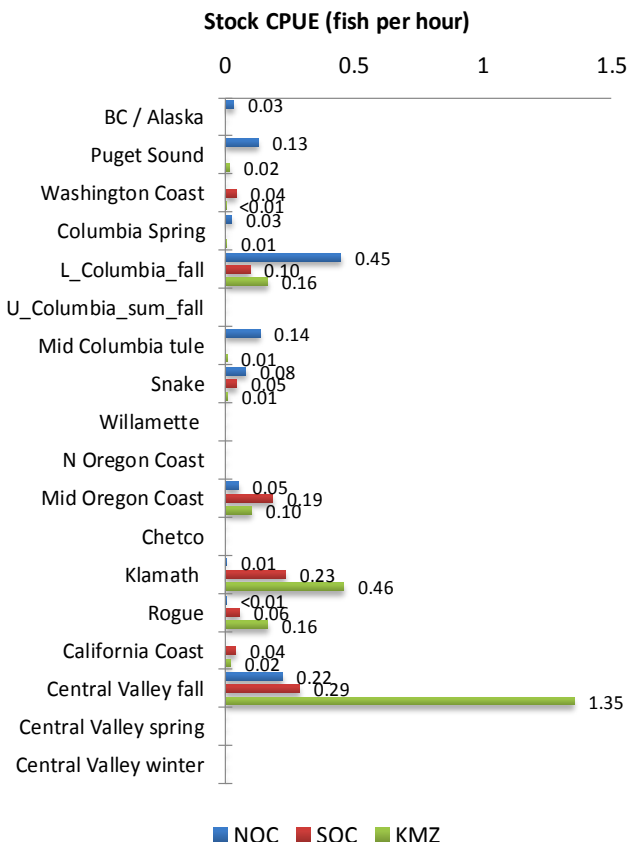
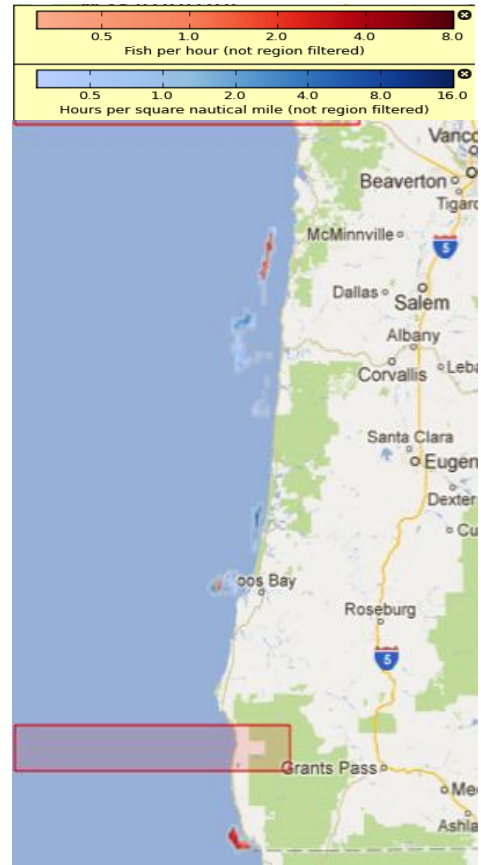
# Project CROOS

## Time Period 6 : July 16 – 31, 2012

### Period 6 Sample Statistics

	NOC	SOC	KMZ
Number hours fished	89.7	75.8	52.4
Fish caught per hour effort (CPUE)	1.14	0.99	2.31
Number legal-sized fish sampled	102	75	121
Numbers of fish genotyped	102	25	112
Percent of fish genotyped	100%	33%	93%

To the right, aggregate catch in CPUE (red) and aggregate effort (blue) is shown for the sixth time period. To protect individual fisherman's data, aggregate catch maps are not shown if fewer than 3 vessels were fishing in a zone in this time period. The average catch per hour in the NOC (1.14) was higher than this time last year (0.37). The average catch per hour for SOC (0.99) was higher than this time last year (0.53). The average catch per hour for KMZ (2.31) was higher than this time last year (0.51).



Shown to the left, effort, catch and genetic stock identification results are combined to generate "catch per hour per stock" estimates

In the sixth time period, Central Valley fall was the dominant component of harvest for the SOC and the KMZ. The dominant component of harvest for the NOC was Lower Columbia Fall. In the NOC the second largest component of harvest was Central Valley fall and in the SOC and KMZ the second largest component of harvest was Klamath.

**NOC**=Northern Oregon Coast  
(Cape Falcon to Florence Jetty)  
**SOC**=Southern Oregon Coast  
(Florence Jetty to Humbug Mtn)  
**KMZ**=Klamath Management Zone  
(Humbug Mtn to OR/CA boarder)

# Project CROOS July Historical Data

## July CROOS Sample Statistics

	2010	2011	2012
Number days fished	128	61	65
Fish caught per boat day (CPUE)	3.813	3.066	7.523
Number legal-sized fish sampled	488	187	489

Here we show the combined (2010, 2011, 2012) July CPUEs for 17 stock groups estimated from GSI sampling.. GSI data show Central Valley Fall stock was nearly absent from Oregon fisheries in 2010 and 2011. It is starting to make a comeback in 2012. The results for July are similar to the results for June, Mid Oregon Coast is not as predominant as seen in 2011, while mid Columbia tule stock CPUE is relatively similar in June 2012 to June 2010.

